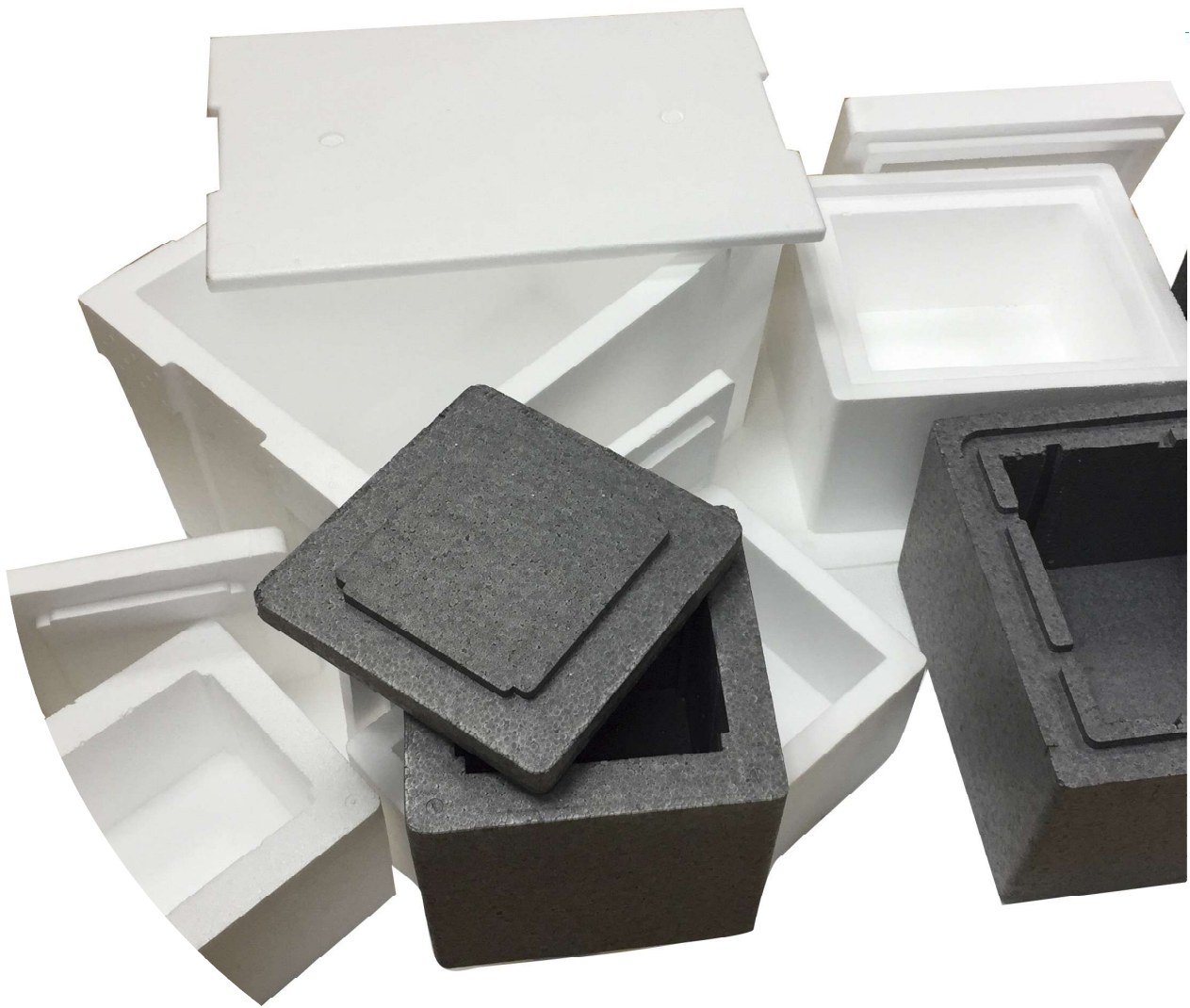


# Contenedores Térmicos



# Contenedores Térmicos



REF	DIM.EXTERIOR	DIM.INTERIOR	Espesor pared	VOL	Und/bulto
194	138x138x175	112x112x125	13 mm	1,50	200



REF	DIM.EXTERIOR	DIM.INTERIOR	Espesor pared	VOL	Und/bulto
529	254x170x118	210x127x70	23 mm	1,70	36



REF	DIM.EXTERIOR	DIM.INTERIOR	Espesor pared	VOL	Und/bulto
501	172x162x190	142x132x160	15 mm	2,70	12



REF	DIM.EXTERIOR	DIM.INTERIOR	Espesor pared	VOL	Und/bulto
423	285x155x135	250x120x110	18 mm	3	32



REF	DIM.EXTERIOR	DIM.INTERIOR	Espesor pared	VOL	Und/bulto
429	255x172x165	210x127x115	23 mm	3	24



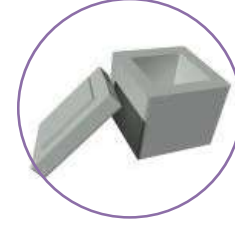
REF	DIM.EXTERIOR	DIM.INTERIOR	Espesor pared	VOL	Und/bulto
640	250x250x195	170x170x120	40 mm	3,5	20



REF	DIM.EXTERIOR	DIM.INTERIOR	Espesor pared	VOL	Und/bulto
358	238x175x180	205x140x135	17 mm	4	24



REF	DIM.EXTERIOR	DIM.INTERIOR	Espesor pared	VOL	Und/bulto
182-C	250x250x180	200x200x130	25 mm	5	20



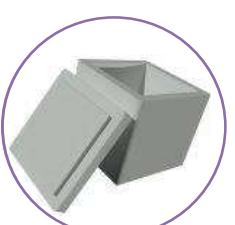
REF	DIM.EXTERIOR	DIM.INTERIOR	Espesor pared	VOL	Und/bulto
149	250x250x255	170x170x170	40 mm	5	16



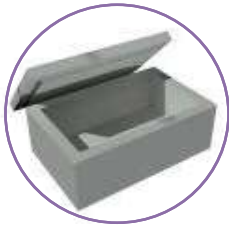
REF	DIM.EXTERIOR	DIM.INTERIOR	Espesor pared	VOL	Und/bulto
182-A	250x250x255	190x190x190	30 mm	7	16



REF	DIM.EXTERIOR	DIM.INTERIOR	Espesor pared	VOL	Und/bulto
526	396x268x148	356x228x108	20 mm	8	16



REF	DIM.EXTERIOR	DIM.INTERIOR	Espesor pared	VOL	Und/bulto
182-B	250x250x255	200x200x200	25 mm	8	16



REF	DIM.EXTERIOR	DIM.INTERIOR	Espesor pared	VOL	Und/bulto
464	440x280x180	380x220x120	30 mm	10	12



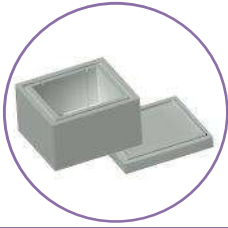
REF	DIM.EXTERIOR	DIM.INTERIOR	Espesor pared	VOL	Und/bulto
636	380x335x270	280x235x170	50 mm	12	4
636-A	380x335x320	280x235x220	50 mm	15	4



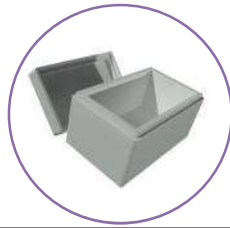
REF	DIM.EXTERIOR	DIM.INTERIOR	Espesor pared	VOL	Und/bulto
525	396x268x248	356x228x208	20 mm	16	10



# Contenedores Térmicos



REF	DIM.EXTERIOR	DIM.INTERIOR	Espesor pared	VOL	Und/bulto
744	435x390x305	325x280x200	55 mm	18	4



REF	DIM.EXTERIOR	DIM.INTERIOR	Espesor pared	VOL	Und/bulto
103-B	410x250x315	360x200x260	25 mm	19	10



REF	DIM.EXTERIOR	DIM.INTERIOR	Espesor pared	VOL	Und/bulto
292	420x375x290	340x295x210	40 mm	21	4



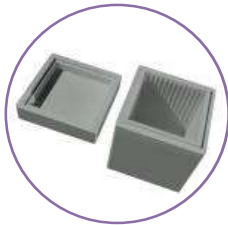
REF	DIM.EXTERIOR	DIM.INTERIOR	Espesor pared	VOL	Und/bulto
103-A	410x250x385	360x200x330	25 mm	23	8



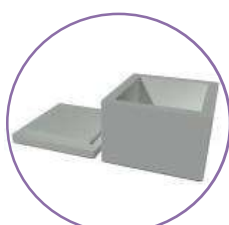
REF	DIM.EXTERIOR	DIM.INTERIOR	Espesor pared	VOL	Und/bulto
513	550x400x295	470x320x200	40 mm	30	4



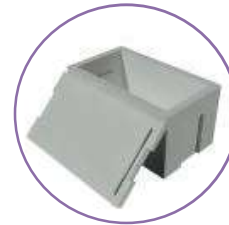
REF	DIM.EXTERIOR	DIM.INTERIOR	Espesor pared	VOL	Und/bulto
498	600x400x260	540x340x205	30 mm	38	4



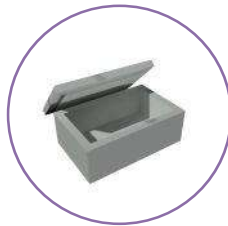
REF	DIM.EXTERIOR	DIM.INTERIOR	Espesor pared	VOL	Und/bulto
689-D	500x500x320	392x392x210	55 mm	32	3



REF	DIM.EXTERIOR	DIM.INTERIOR	Espesor pared	VOL	Und/bulto
453	500x470x355	400x370x255	50 mm	38	3



REF	DIM.EXTERIOR	DIM.INTERIOR	Espesor pared	VOL	Und/bulto
616	700x400x310	620x320x230	40 mm	46	



REF	DIM.EXTERIOR	DIM.INTERIOR	Espesor pared	VOL	Und/bulto
413	500x470x470	400x370x370	50 mm	55	2



REF	DIM.EXTERIOR	DIM.INTERIOR	Espesor pared	VOL	Und/bulto
512	550x400x435	470x320x340	40 mm	51	3



REF	DIM.EXTERIOR	DIM.INTERIOR	Espesor pared	VOL	Und/bulto
616-N	705x405x395	625x325x315	40 mm	63	



REF	DIM.EXTERIOR	DIM.INTERIOR	Espesor pared	VOL	Und/bulto
689-C	500x500x550	392x392x440	55 mm	67	2



REF	DIM.EXTERIOR	DIM.INTERIOR	Espesor pared	VOL	Und/bulto
512-N50	600x480x485	500x380x385	50 mm	73	2



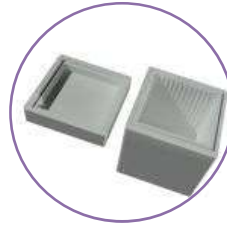
REF	DIM.EXTERIOR	DIM.INTERIOR	Espesor pared	VOL	Und/bulto
689-B	500x500x620	392x392x515	55 mm	79	2

# Contenedores Térmicos



\* fondo : 750x445x370  
tapa : 750x445x65

REF	DIM.EXTERIOR	DIM.INTERIOR	Espesor pared	VOL	Und/bulto
<b>725 *</b>	740x440x440	640x345x340	50 mm	74	2



REF	DIM.EXTERIOR	DIM.INTERIOR	Espesor pared	VOL	Und/bulto
<b>689-A</b>	500x500x680	392x392x570	55 mm	87	2



REF	DIM.EXTERIOR	DIM.INTERIOR	Espesor pared	VOL	Und/bulto
<b>735</b>	500x515x600	410x420x485	45 mm	91	2



\* fondo : 755x450x495  
tapa : 755x450x65

REF	DIM.EXTERIOR	DIM.INTERIOR	Espesor pared	VOL	Und/bulto
<b>726 *</b>	755x450x565	655x350x465	50 mm	106	2



\* fondo : 760x450x370  
tapa : 760x450x295

REF	DIM.EXTERIOR	DIM.INTERIOR	Espesor pared	VOL	Und/bulto
<b>727 *</b>	760x450x675	660x350x575	50 mm	133	2



\* fondo : 760x450x495  
tapa : 760x450x295

REF	DIM.EXTERIOR	DIM.INTERIOR	Espesor pared	VOL	Und/bulto
<b>728 *</b>	760x450x805	660x350x705	50 mm	163	2



REF	DIM.EXTERIOR	DIM.INTERIOR	Espesor pared	VOL	Und/bulto
<b>758-A</b>	345x245x320	200x290x275	25 mm	17	12
<b>758-B</b>	345x245x285	200x290x240	25 mm	14	12



REF	DIM.EXTERIOR	DIM.INTERIOR	Espesor pared	VOL	Und/bulto
<b>748-F1</b>	550x370x355	470x280x295	30 mm	42	6
<b>748-F2</b>	550x365x335	470x280x280	30 mm	39	6
<b>748-F3</b>	545x365x285	470x280x230	30 mm	32	8
<b>748-F4</b>	540x365x240	470x280x185	30 mm	25	8
<b>748-F5</b>	540x365x225	470x280x165	30 mm	21	10

